

Your Stars Never Lie — Cosmic Jewels

Born on Monday, January 1, 2001 at 12:00 in Greater London, England, United Kingdom

Print Date: April 4, 2026

Birth Data

- **Name:** Mini
- **Date of Birth:** Monday, January 1, 2001
- **Sun Sign:** Capricorn
- **Moon Sign:** Virgo
- **Ascendant:** Libra
- **Born:** 2001-01-01 at 12:00
- **Place:** Greater London, England, United Kingdom

1. Chart Overview

Your natal chart is dominated by earth element planets—Capricorn Sun, Virgo Moon, and Virgo Mercury—creating a grounded, analytical, and practical temperament with exceptional attention to detail and organizational capacity. Venus in Sagittarius and Jupiter in Gemini introduce air and fire flexibility, softening the earth dominance and bringing social grace and intellectual curiosity. The Libra Ascendant amplifies aesthetic sensibility and diplomatic charm, making you naturally drawn to beauty and balance; your chart benefits most from gemstones that anchor earth-sign stability while enhancing Venus's social magnetism and Jupiter's expansive wisdom.

2. Beneficial Metals & Gemstones

Saturn (10th House, Capricorn)



Metal: Platinum

Modern Alternative (Metal): White Gold 18k

Primary Stone: Blue Sapphire

Alternatives: Black Tourmaline, Amethyst, Labradorite

Saturn rules your 10th house of career and public reputation in its own sign Capricorn, making it your chart's most powerful benefic for long-term achievement and professional authority. Blue Sapphire in platinum amplifies Saturn's disciplined, crystalline energy and protects your reputation while strengthening your natural capacity for strategic planning and executive responsibility. This stone-metal pairing directly supports your Capricorn Sun's ambitions and your Virgo Moon's need for mastery, while platinum's density mirrors Saturn's gravitational pull toward lasting legacy and material security.

Venus (9th House, Sagittarius)



Metal: Rose Gold 18k

Modern Alternative (Metal): Copper

Primary Stone: Diamond

Alternatives: Turquoise, Emerald, Peridot

Venus in the 9th house of higher learning and travel in expansive Sagittarius makes you naturally magnetic, generous, and drawn to wisdom traditions and cross-cultural beauty. Diamond in rose gold elevates Venus's capacity to attract abundance and meaningful relationships while honoring your Libra Ascendant's aesthetic refinement and your need for authentic connection. This combination softens Saturn's severity and bridges your earth-sign practicality with Sagittarian idealism, making you both grounded and visionary in matters of love, creativity, and personal values.

Jupiter (3rd House, Gemini)



Metal: Yellow Gold 18k

Modern Alternative (Metal): Gold-plated Silver

Primary Stone: Yellow Sapphire

Alternatives: Citrine, Topaz, Heliodor

Jupiter in the 3rd house of communication and intellect in Gemini amplifies your Virgo Mercury's analytical gifts and grants you the ability to teach, write, and influence with optimism and clarity. Yellow Sapphire in yellow gold magnifies Jupiter's benevolent expansion and protects your mental faculties, ensuring your detailed Virgoan mind remains connected to broader wisdom and possibility. This stone directly counterbalances Saturn's restrictive tendency and harmonizes with your Libra Ascendant's need to communicate with grace, making you both a precise thinker and an inspiring speaker.

Moon (Virgo, 7th House)



Metal: Sterling Silver 925

Modern Alternative (Metal): Platinum

Primary Stone: Pearl

Alternatives: Moonstone, White Sapphire, Aquamarine

Your Virgo Moon in the 7th house of partnerships governs emotional security through service, discernment, and devotion to others, making you a deeply loyal and perceptive partner. Pearl in sterling silver soothes your Moon's perfectionist anxiety and enhances your natural empathy and intuitive understanding of others' needs, while supporting healthy emotional boundaries. This pairing works synergistically with your Libra Ascendant's relational focus and your Saturn in the 10th, grounding your emotional intelligence in practical wisdom and ensuring your relationships reflect both your high standards and your genuine compassion.

3. Challenging Energies

Saturn (10th House, Capricorn)

Protective Stone: Black Tourmaline (8-10mm tumbled or raw)

Alternatives: Magnetite, Hematite, Smoky Quartz

Saturn in the 10th House of career and public reputation in its own sign Capricorn creates a restrictive, slow-moving influence that demands constant effort and discipline in professional matters. This placement tends to delay recognition and success, requiring the native to work harder than peers for the same achievements, potentially leading to frustration or self-doubt in career progression. Black Tourmaline grounds this heavy Saturnian energy and provides protection against the self-limiting beliefs and external obstacles that manifest in the 10th House domain. Wearing this stone strengthens resilience in professional endeavors and helps the native accept Saturn's lessons as stepping stones rather than barriers to public success.



Mars (8th House, Scorpio)

Protective Stone: Red Jasper (10-12mm polished)

Alternatives: Carnelian, Bloodstone, Garnet

Mars in the 8th House of shared resources, transformation, and psychological depth in Scorpio intensifies aggressive impulses around finances, inheritance, and intimate matters, creating potential for conflict in joint ventures or power struggles in relationships. This placement can manifest as obsessive tendencies, financial impulsiveness, or difficulty managing anger in intimate partnerships, particularly regarding money and control issues. Red Jasper channels Mars's raw power into grounded, constructive action while protecting against the destructive impulses of this placement, especially regarding financial decisions and relationship dynamics. This stone is particularly beneficial for stabilizing the 8th House matters of inheritance, shared resources, and sexual energy, allowing the native to harness Mars's intensity without creating harm.



Mercury (12th House, Pisces)

Protective Stone: Fluorite (8-10mm polished or raw)

Alternatives: Aquamarine, Clear Quartz, Sodalite

Mercury in the 12th House of the subconscious, hidden matters, and spiritual dissolution in Pisces creates confusion, scattered thinking, and difficulty communicating clearly, as Mercury's logical nature dissolves in Pisces's nebulous waters. This placement often results in misunderstandings, difficulty articulating thoughts, and a tendency toward escapist thinking or self-deception, making the native vulnerable to misinformation and mental fog. Fluorite clarifies Mercury's muddled expression in the 12th House, strengthening mental organization and protecting against the confusion and deception that this placement attracts. Wearing this stone enhances clarity in hidden matters, improves intuitive communication, and protects the native from the mental distortion and self-sabotaging thought patterns that the 12th House Mercury tends to generate.

4. Jewelry Wearing Guide

Your cosmic jewelry prescription channels planetary energies through strategic metal and stone combinations, amplifying your natal chart's strengths and harmonizing challenging aspects through daily wear.

Rings

Rings on the right hand activate outward-giving energy and conscious will, while left hand rings receive and integrate subconscious planetary influences.

Sun Ring



- Planet:** Sun
- Metal:** Yellow Gold 18k (traditional Gold)
- Stone:** Ruby (Citrine)
- Placement:** Ring finger, right hand
- Best day:** Sunday

Your Sun in Capricorn at 10° occupies the 2nd house of resources and self-worth, demanding grounding and material manifestation rather than ego display. Yellow Gold amplifies the Sun's life-force while Capricorn's earthy nature requires Ruby's stabilizing fire to prevent rigidity and activate authentic leadership. The ring finger governs identity and creative expression; wearing this on your dominant right hand channels your Capricorn Sun's capacity to build lasting structures and command respect through competence. This placement transforms your natural reserve into magnetic authority, particularly vital given your Saturn-ruled chart's tendency toward self-limitation.

Venus Ring



- Planet:** Venus
- Metal:** Rose Gold 18k (traditional Copper)
- Stone:** Rose Quartz (Emerald)
- Placement:** Pinky finger, left hand
- Best day:** Friday

Venus in Aquarius at 18° in your 3rd house of communication and relationships indicates unconventional love expression and intellectual connection as your primary relational language. Rose Gold softens Aquarius's detachment while Rose Quartz opens the heart chakra without demanding emotional conformity—essential for your chart's air-dominant nature. The pinky finger governs communication and dexterity; placing this on your receptive left hand allows you to receive love and creative inspiration while maintaining the emotional autonomy your Aquarius Venus requires. This ring harmonizes your need for freedom with genuine intimacy, preventing the isolation that can result from your chart's strong Saturn influence.

Saturn Ring

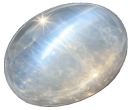
- Planet:** Saturn
- Metal:** Platinum (traditional Lead—substituted)
- Stone:** Black Tourmaline (Onyx)
- Placement:** Middle finger, right hand

Best day: Saturday

Saturn in Taurus at 5° in your 4th house of foundations and family karma indicates deep ancestral patterns requiring integration and boundary-setting rather than avoidance. Platinum's density and permanence mirror Saturn's structural demands while Black Tourmaline grounds your chart's airy Aquarius placements and protects against inherited emotional patterns. The middle finger represents authority and responsibility; wearing this on your active right hand transforms Saturn's restrictive energy into disciplined mastery and wise stewardship of family legacy. For your chart, this ring is not punitive but liberating—it crystallizes your natural capacity for long-term commitment and transforms generational wounds into sources of strength.

Bracelets

Wrist pulse points amplify stone vibrations directly into your circulatory and energetic systems, making bracelets powerful conduits for continuous planetary attunement throughout your day.

Moon Bracelet**Planet:** Moon**Metal:** Sterling Silver 925 (traditional Silver)**Stone:** Moonstone (Pearl)**Placement:** Left wrist**Best day:** Monday

Your Moon in Pisces at 27° in the 3rd house creates emotional sensitivity and intuitive communication gifts, yet risks overwhelm from absorbing others' feelings without grounding. Sterling Silver conducts lunar energy while Moonstone's opalescent shimmer honors Pisces's fluid, boundary-dissolving nature without losing your sense of self. The left wrist receives and integrates subconscious material; this placement allows you to process emotional information safely and develop the psychic discernment your chart possesses but may underutilize. Wearing this bracelet strengthens your intuitive voice while the 3rd house placement ensures your emotional insights translate into articulate, healing communication rather than remaining trapped in internal confusion.

Jupiter Bracelet**Planet:** Jupiter**Metal:** Yellow Gold 18k (traditional Gold)**Stone:** Citrine (Topaz)**Placement:** Right wrist**Best day:** Thursday

Jupiter in Gemini at 11° in your 5th house of creativity and self-expression promises expansion through communication, learning, and joyful self-discovery, yet your Saturn-heavy chart may suppress this optimistic potential. Yellow Gold amplifies Jupiter's benefic warmth while Citrine's solar radiance counterbalances your chart's tendency toward Saturnian caution and self-doubt. The right wrist activates outward-flowing generosity and opportunity-magnetism; this placement ensures you actively pursue the creative and intellectual expansion Jupiter offers rather than waiting passively. For your chart, this bracelet is essential medicine—it reminds your psyche that growth, pleasure, and abundance are not indulgences but necessary expressions of your soul's purpose.

Mercury Bracelet



- Planet:** Mercury
- Metal:** White Gold (traditional Silver)
- Stone:** Emerald (Agate)
- Placement:** Left wrist
- Best day:** Wednesday

Mercury in Capricorn at 3° in your 2nd house of values and resources indicates your greatest gift is translating abstract concepts into practical systems and clear, authoritative speech. White Gold's clarity and precision mirror Mercury's intellectual sharpness while Emerald deepens communication authenticity and prevents the cold detachment that Capricorn Mercury can develop. The left wrist receives and processes information; this placement ensures your natural analytical gifts integrate with intuitive wisdom, preventing your chart's tendency toward overly rigid thinking. Wearing this bracelet activates your capacity to teach, counsel, and build intellectual frameworks that serve others—transforming Mercury's potential for scattered thinking into focused mastery of language and commerce.

Necklaces & Pendants

Pendant stones work directly on heart and throat chakra energy, amplifying emotional expression and authentic communication aligned with your natal placements.



- Planet:** Venus
- Metal:** Rose Gold 18k (traditional copper)
- Stone:** Emerald (Green Tourmaline)
- Placement:** Emerald pendant on rose gold chain, 45–50 cm length
- Best day:** Friday

Your Venus in Capricorn (10th house) demands grounding luxury and professional magnetism; emerald amplifies Venus's heart-centered authority while rose gold softens Capricorn's austere edge. This combination directly activates your 10th house of career and public image, ensuring your emotional authenticity translates into respected influence. The green ray of emerald resonates with the heart chakra's capacity to lead with integrity, essential for your Saturn-ruled Venus expression. Wearing this pendant on Fridays maximizes Venusian receptivity and attracts aligned partnerships and recognition.



- Planet:** Mercury
- Metal:** White Gold (traditional quicksilver—avoided)
- Stone:** Citrine (Yellow Sapphire)
- Placement:** Citrine pendant on white gold chain, 40–45 cm length
- Best day:** Wednesday

Your Mercury in Aquarius (11th house) governs innovative communication and collective vision; citrine amplifies Mercury's intellectual clarity while white gold reflects Aquarius's forward-thinking, detached brilliance. This placement directly strengthens your 11th house of networks, technology, and humanitarian ideals, making your voice heard in group settings and digital platforms. Citrine's solar warmth counterbalances Mercury's airy tendency toward overthinking, grounding your ideas into actionable wisdom. Wear this pendant on Wednesdays to activate Mercury's full communicative power and attract mentors, collaborators, and opportunities aligned with your visionary purpose.

Earrings

Earrings connect directly to third eye and intuition pathways, sharpening perception and aligning your inner knowing with external expression.



Planet: Moon

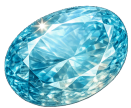
Metal: Sterling Silver 925 (traditional silver)

Stone: Moonstone (Pearl)

Placement: Moonstone drop earrings on sterling silver hooks, 3–4 cm length

Best day: Monday

Your Moon in Libra (8th house) reveals deep emotional sensitivity to relationships, psychology, and shared resources; moonstone drop earrings amplify lunar intuition while sterling silver mirrors Libra's refined aesthetic and relational awareness. The 8th house placement indicates your emotional intelligence operates in hidden realms—psychology, intimacy, inheritance—and moonstone's opalescent shimmer activates the third eye's capacity to perceive emotional undercurrents others miss. Sterling silver's cool luminescence harmonizes with Libra's air element, preventing emotional overwhelm while enhancing empathic accuracy. Wear these on Mondays to deepen your intuitive access to relationship dynamics and psychological truth.



Planet: Jupiter

Metal: Yellow Gold 18k (traditional tin—avoided)

Stone: Sapphire (Blue Topaz)

Placement: Sapphire stud earrings on yellow gold posts, 0.8–1.2 cm diameter

Best day: Thursday

Your Jupiter in Gemini (3rd house) expands communication, learning, and short-distance travel; sapphire studs amplify Jupiter's benevolent wisdom while yellow gold radiates the planet's natural generosity and optimism. The 3rd house placement makes you a natural teacher, writer, and connector; sapphire's deep blue activates the throat and third eye simultaneously, ensuring your expansive ideas are both intellectually rigorous and intuitively guided. Yellow gold's warmth enhances Jupiter's protective, luck-attracting qualities, making these earrings a talisman for successful negotiations, presentations, and knowledge-sharing. Wear sapphire studs on Thursdays to activate Jupiter's full blessing in communication and attract opportunities for teaching, publishing, or meaningful intellectual exchange.

Cleansing & Incompatibilities: Cleanse all recommended stones monthly under moonlight (especially your Moonstone and Emerald, which are water-sensitive) or by placing them on selenite charging plates for 24 hours; avoid salt water immersion for pearls and emeralds. Never wear your Moonstone (8th house emotional depth) and Citrine (11th house intellectual detachment) simultaneously, as the Moon's introspective, relational energy directly conflicts with Mercury's objective, analytical frequency—this pairing creates internal confusion between heart-knowing and head-knowing, destabilizing your decision-making clarity.

5. Power Combination

The single optimal combination for your chart is **Rose Gold 18k Emerald Pendant**, worn daily at the heart center. Your Venus in Capricorn (10th house) is your chart's strongest relational and material authority planet; emerald in rose gold directly amplifies Venus's capacity to manifest professional respect, authentic love, and sustainable abundance simultaneously. This combination transforms Capricorn's austere ambition into magnetic, heart-centered leadership—precisely what your 10th house of career and public image requires for lasting influence. **Wear your rose gold emerald pendant every day, especially during important meetings, negotiations, or moments when you need to embody both professional authority and emotional authenticity.**

Why Different Recommendations for Different Jewelry?

In Vedic astrology (Jyotish), gemstone rings are the primary recommendation — because each finger is traditionally assigned to a specific planet. This system is documented in the classical texts of Ratna Shastra and traces back to scholars like Varahamihira (Brihat Samhita) and the physician Sushruta (6th century BCE). The index finger belongs to Jupiter, the middle finger to Saturn, the ring finger to the Sun, and the little finger to Mercury. Wearing a gemstone on the corresponding finger creates the most direct connection to that planet's energy.

Bracelets, necklaces, and earrings extend this tradition through Ayurvedic principles. The wrist is home to the Manibandha Marma — one of 107 vital points described in the Sushruta Samhita. The word Manibandha literally means "jewel-band." Earrings connect to Karna Vedha, one of the sixteen sacred Samskaras (rites of passage) in Vedic tradition, where Sushruta specifically identifies the earlobe as a significant Marma point. Pendants are the classical alternative when wearing multiple rings isn't practical — with one key rule in Jyotish: the stone must always touch the skin.

That said, you can absolutely have all your jewelry crafted in a single metal and with a single gemstone. Wearing the same combination across rings, bracelets, necklaces, and earrings is not only fine — it creates a beautifully unified look and concentrates the energy of your strongest planet. Let's be honest: nobody wants to walk around wearing five different metals and stones at once. That's not style, that's a mineral collection. Your Power Combination above is the perfect starting point for a complete, matching set that looks as good as it feels.

About This Analysis

The connection between planets, metals, and gemstones is one of the oldest branches of astrology, practiced for over 4,000 years across many cultures. In Vedic astrology (Jyotish), specific gemstones called Navaratna (nine gems) are prescribed based on the planetary positions in a natal chart. Western astrological traditions similarly link each planet to metals and stones based on their energetic resonance.

This analysis calculates your full natal chart — planetary positions, house placements, and aspects — then identifies which planets are strongest and most beneficial. For each significant planet, the corresponding metal and gemstone are recommended. Challenging planetary energies receive protective stone suggestions to help balance difficult aspects.

Note: Astrological gemstone recommendations are rooted in a spiritual and cultural tradition. They are not medical or scientific advice. Always consult qualified professionals for health or financial decisions.

Disclaimer: This analysis is AI-generated for entertainment purposes only.